



**THE CARLYLE JOHNSON MACHINE COMPANY, L.L.C.**



## **MAXITORQ®**

**Standard and Custom Designed  
Clutches - Brakes  
Power Transmission Solutions**



The Carlyle Johnson Machine Company, L.L.C. has complete design, manufacturing, assembly and test capabilities in our facility in Bolton, CT. This allows us to engineer unique solutions to your power transmission requirements.

Our engineers are available directly to you. Simply contact us to get immediate results. If our wide range of standard and application-specific products do not meet your needs, we can design a unique product for you.

## Electric Actuation



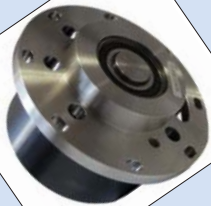
### Electric Multiple Disc Clutches/Brakes-Model EMA

Torque range: 15 lb.ft. - 5000 lb.ft.  
OD range: 2" - 12"  
Bore range: 1/2" - 3 1/2"



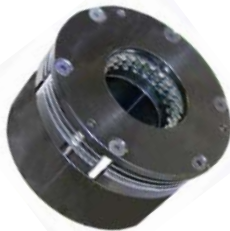
### Spring Set, Electric Multiple Disc Clutches/Brakes-Model FEA

Torque range: 12 lb.ft. - 600 lb.ft.  
OD range: 2" - 12"  
Bore range: 1/2" - 3 1/2"



### Electric Jaw Clutches/Brakes-Models JEM & JEB

Torque range: 50 lb.ft. - 5000 lb.ft.  
OD range: 3" - 10"  
Bore range: 1/2" - 3 1/2"



### Spring Set Electric Multiple Disc Brakes-Model FEB

Torque range: 5 lb.ft. - 5000 lb.ft.  
OD range: 2" - 22"  
Bore range: 1/2" - 3 1/2"



### Electric Multiple Disc High Torque Brakes-Model HTB

Torque range: 10 lb.ft. - 6000 lb.ft.  
OD range: 2" - 22"  
Bore range: 1/2" - 3 1/2"

## ***Air/Hydraulic Actuation***



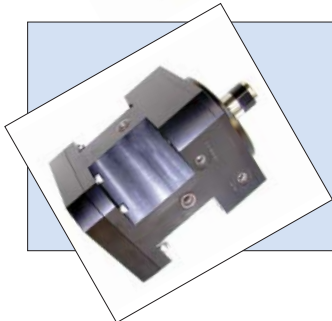
### **Air/Hydraulic Multiple Disc Clutches/Brakes-Model AHA**

Torque range: 30 lb.ft. - 1200 lb.ft.  
OD range: 3 1/2" - 10"  
Bore range: 3/4" - 3"



### **Air/Hydraulic Spring Applied Multiple Disc Brakes-Model AFS**

Torque range: 15 lb.ft. - 1000 lb.ft.  
OD range: 3 1/2" - 12"  
Bore range: 3/4" - 3"



### **Air/Hydraulic Dual Piston Multiple Disc Brakes-Model DAP**

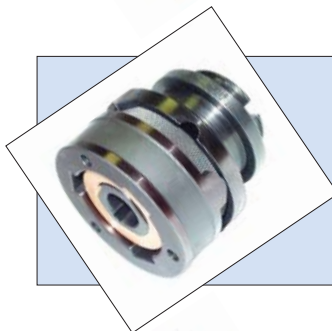
Torque range: 5 lb.ft. - 3000 lb.ft.  
OD range: 3 1/2" - 12"  
Bore range: 3/4" - 3"

## ***Mechanical Actuation***



### **Multiple Disc Clutches/Brakes-Models MMS & MMD**

Torque range: 10 lb.ft. - 2400 lb.ft.  
OD range: 2 5/8" - 9"  
Bore range: 1/2" - 3"



### **Multiple Disc Overload Release Clutches-Models MOR & ORI**

Torque range: 10 lb.ft. - 2400 lb.ft.  
OD range: 2 5/8" - 9"  
Bore range: 1/2" - 3"



### **Torq-Lok® One-way Bi-directional Clutch-Model MTL**

Torque range: 15 lb.ft. - 600 lb.ft.  
OD range: 3" - 10"  
Bore range: 1/2" - 2"

United States Patent  
No. 6974015B2

Other bore sizes and voltages are available. Torque can be adjusted to customers' specific needs.

# ***The solution to your power transmission needs...***

*The Carlyle Johnson Machine Company, L.L.C. has been at the forefront of innovative power transmission technology for over one hundred years. During this time we have leveraged advances in materials and pushed the boundaries of design to create highly efficient and effective solutions to fulfill our customers' unique requirements.*

*Focusing on new applications with ever-changing power transmission needs, we remain at the leading edge with new innovations requiring advanced R&D, testing and prototype development.*

*Our engineering staff is capable of solving your toughest power transmission challenges. We are always just a phone call away.*



**Phone: 860-643-1531   Toll Free: 888-629-4867   FAX: 860-646-2645**

**[www.cjmco.com](http://www.cjmco.com)**

## ***Contacts:***

Aerospace/Military/International

Commercial US

General Support & Parts / Repairs

Tom Thiffault   E-mail: [tomt@cjmco.com](mailto:tomt@cjmco.com)

Ron Gamache   E-mail: [rrgamache@cjmco.com](mailto:rrgamache@cjmco.com)

860-643-1531 ex 116 or 117

[maxitorq@cjmco.com](mailto:maxitorq@cjmco.com)



 **THE CARLYLE JOHNSON MACHINE COMPANY, LLC**

291 Boston Turnpike • P O Box 9546 • Bolton, Connecticut 06043-9546  
(860) 643-1531 • FAX (860) 646-2645 • TOLL FREE (888) 629-4867 • [www.cjmco.com](http://www.cjmco.com)